



# INGLENOOK-NZ (HIGH-OUTPUT)

## MULTIFUEL CLEANBURN STOVE

Installation and Operating Instructions

Tested to AS/NZS 2918:2001

Test report 14/2697 Double Door Stove

Test report 14/2698 Single Door Stove

**WARNING:** Improper installation, adjustment, alteration, service or maintenance can cause injury or Property damage. For assistance or additional information consult an authorized technician, or your Hunter Dealer.

**FOR YOUR SAFETY:** Do not store or use gasoline or other flammable vapours and liquids in the vicinity off this appliance. Installation and service must be performed by authorized personnel.

**PLEASE KEEP THESE INSTRUCTIONS FOR FURTHER REFERENCE.**

**Manufactured in United Kingdom by:**

**Hunter Stoves Limited**

**Aspen House**

**Pynes Hill**

**Exeter**

**Devon, EX2 5AZ**

**E Mail: [info@hunterstoves.co.nz](mailto:info@hunterstoves.co.nz)**

**Web: [www.Hunterstoves.co.uk](http://www.Hunterstoves.co.uk)**

**Distributed in New Zealand by:**

**Classic Cookers**

**151 Bramleys Road**

**RD 1**

**Kaiapoi**

**Ph. 03 3106534**

**Email: [info@classiccookers.co.nz](mailto:info@classiccookers.co.nz)**

**Web: [www.classiccookers.co.nz](http://www.classiccookers.co.nz)**



<b>Contents</b>	<b>Page No</b>
Technical Specifications	Page 3
Assembly Instructions	Page 4-5
Installation Instructions	Page 6-12
Operating Instructions	Page 13-15
General Maintenance	Page 16-17
Stove Spares	Page 18-20
Service Records	Page 21-22



## **Inglenook NZ High-Output Technical Specification**

Stove Mass 151 kg

### **Wood**

Total Efficiency	78.4 %
Nominal Heat Output	10.2 KW
Mean CO Emission (at 13% O <sub>2</sub> )	0.40 %
Mean Flue Gas Temperature	291 °C
Flue Gas Mass Flow	7.3 g/s

This appliance is not suitable for use in a shared flue.  
This appliance is suitable for intermittent burning.



## Assembly Instructions

### **PLEASE READ THESE INSTRUCTIONS CAREFULLY**

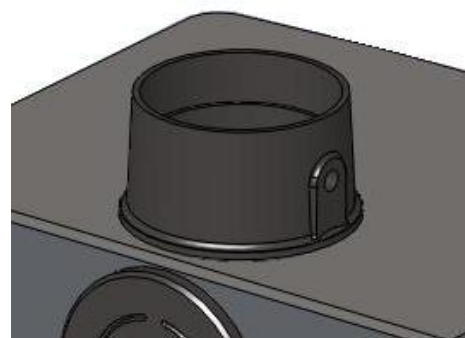
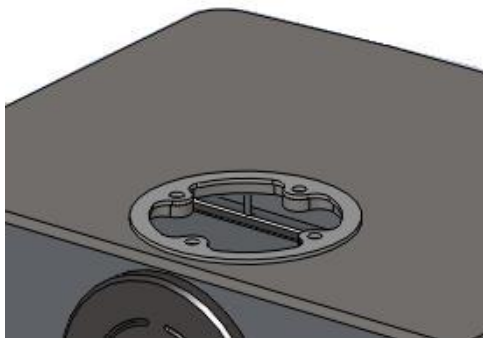
It is important that your stove is correctly installed, as Hunter Stoves Limited cannot accept responsibility for any fault arising through incorrect use or installation.

#### **Important Warning**

This stove must not be installed into a chimney that serves any other heating appliance.

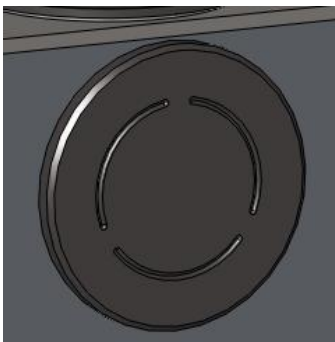
There must not be an extractor fan fitted in the same room as the stove as this can cause the stove to emit fumes into the room.

#### **Flue Collar**



Wind the eight M6 studs supplied into the fixing holes in the flue collar and blanking plate until finger tight. Place the gasket in position on the top plate of the stove and lower the flue collar or blanking plate (as required) on to the stove top, taking care to line up the studs with the fixing holes. Secure in place using the M6 nuts and washers. Fit the two M8 coach bolts in the flue collar to blank off the optional damper handle holes.

#### **Blanking Plate**

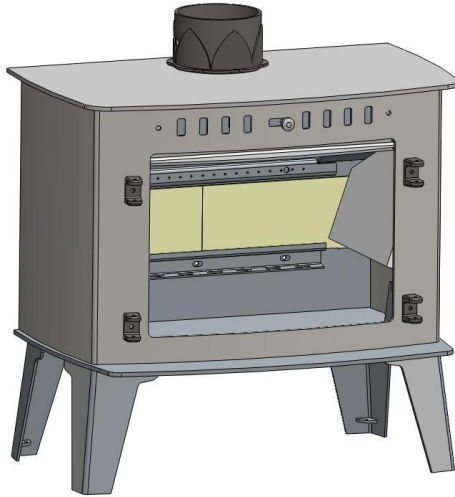


Fit the Flue Gasket and Blanking Plate on the remaining free outlet and secure it, using the two M6 studs.

## Fire Bricks

The Fire Bricks, in this appliance, are factory fitted. The following set of photos show the removal sequence that you will need to employ when servicing your Hunter stove.

### Side Bricks

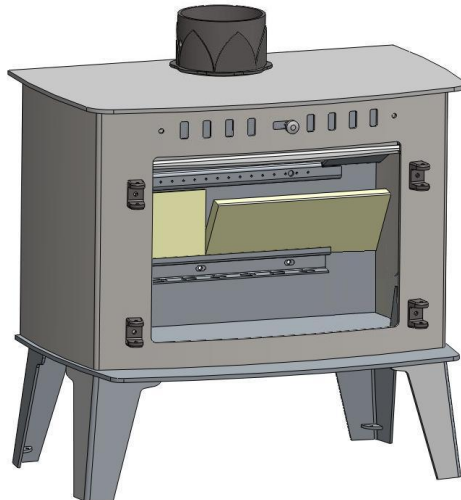


Remove all the Riddling Bars, Ash pans, Cam Bar and Catch Bar.

Slide out both Side Plates.

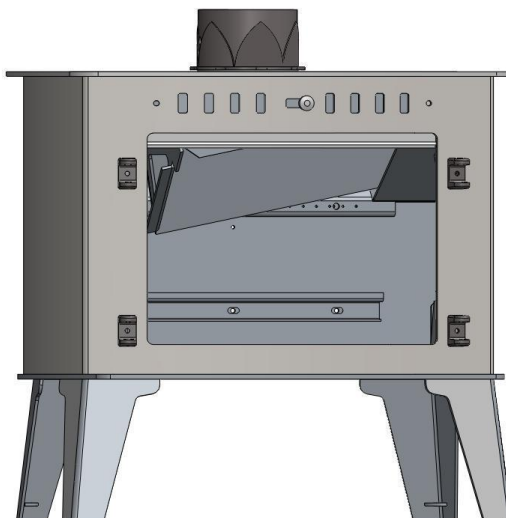
Slide out Side Bricks from base, down into the Stove.

### Rear Brick



Pull the top edge of the Rear Brick forward and lift out of the Stove (repeat for both bricks).

### Baffle



Lift the Baffle and slide to the right. When the left side of the Baffle clears the Baffle Support, lower the Baffle into the Fire Box and remove.

To refit these Fire Bricks and baffle, simply reverse the above procedure.



## **Installation Instructions**

READ THESE INSTRUCTIONS CAREFULLY BEFORE INSTALLATION

**These instructions cover the basic principles to ensure satisfactory installation of the stove, although detail may need slight modification to suit particular local site conditions. In all cases the installation must comply with current Building Regulations, Local Authority Byelaws, and national standards and other specifications or regulations as they affect the installation of the stove. It should be noted that the Building Regulations requirements may be met by adopting the relevant recommendations given in AS/NZS2918:2001**

### **Health and Safety Precautions**

#### **Handling**

Adequate facilities must be available for loading, unloading and site handling.

#### **Fire Cement**

Some types of fire cement are caustic and should not be allowed to come into contact with the skin. In case of contact, wash immediately with plenty of water.

#### **Asbestos**

This stove contains no asbestos. If there is a possibility of disturbing any asbestos in the course of installation then please seek specialist guidance and use appropriate protective equipment.

#### **Metal Parts**

When installing or servicing this stove, care should be taken to avoid the possibility of personal injury.

### **POSITIONING YOUR FREE-STANDING STOVE (WOODFIRE)**

No wall or other fixed object may be closer to the front of the wood fire than one meter.

When fitting a hot water boiler, the wood stove should be close (no more than 10m of Pipe) to the water cylinder.

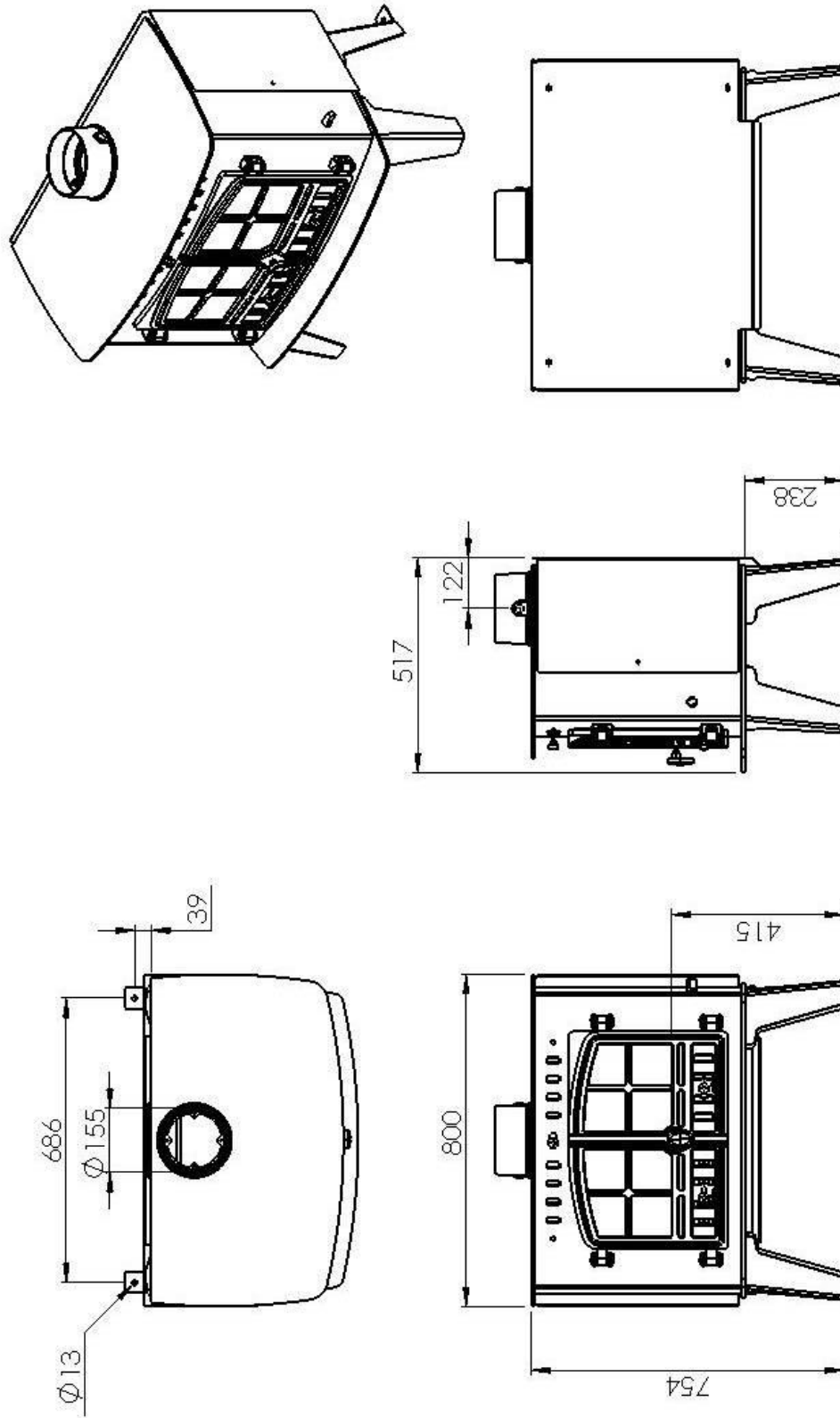
**Determine the installation position for your wood fire only after considering the necessary clearances and checking the practicability of installing the flue system.**

Regard heat resistant walls with heat sensitive surface treatments (e.g. wallpaper or heat sensitive paints) as heat sensitive walls.

There must be a 25mm gap between the flues casing (see Installation Specification Sheets for size) and any combustible material. This space must be available without the removal of structural beams.

Flue installations other than strictly vertical ones are possible. See AS/NZS 2918 for Information on non-vertical flues and flues passing through walls and eaves.

**Inglenook H.O Dimensions (In Millimetres)**



# Installation

## Installing the Flue

Only flue systems tested for the appliance can be used.  
The flue system to be used is a CCHS150 V2.

Full instructions are supplied with the flue kit, and these **MUST** be followed closely, including the minimum flue exit height from the top of the floor protector and the minimum exit height above the roofline or roof ridge as detailed in the instructions.

**Always seal the flue to the flue socket of the firebox** using firebox cement and/or fibreglass rope.

## Other Flue Systems

Flues and flue heat shields other than those listed on the Installation Specification Sheets may be used, but if they have not been tested with these heaters, their installation Clearances will be those specified in AS/NZS 2918:2001 for untested flue installations. Unless otherwise specified, all heat sensitive wall material must be kept at least 600mm away from any flue, which is not fitted with a flue heat shield.

## Flue Draught

A flue draught of minimum 1.2mm to a maximum 2.5mm water gauge is required for satisfactory appliance performance. The flue draught should be checked under fire at high output. If it exceeds the recommended maximum, a draught stabiliser must be fitted so that the rate of burning can be controlled and to prevent over firing. If the reading is less than the recommended minimum than the performance of the appliance will be compromised.

## Air Supply

The room or space containing this appliance needs a permanent, unobstructed air opening of at least 2200mm<sup>2</sup>.

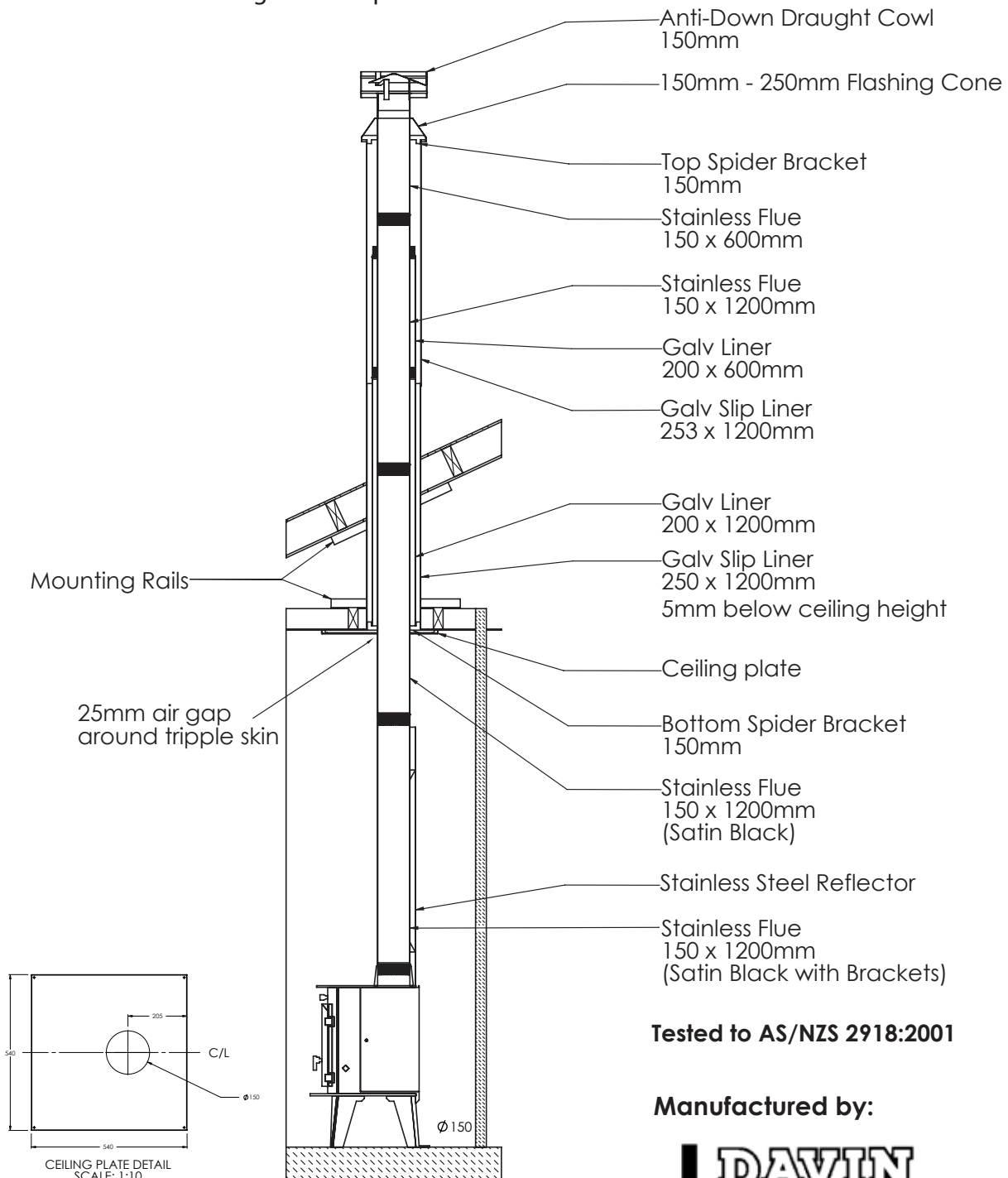
If a draught stabiliser is fitted, the air opening should be at least 4900mm<sup>2</sup>. Due consideration should be given to air requirements for any other appliances in the same room or space.



**CCHS150 Flue System for all Hunter Stoves 150mm Flued Units**

**Herald 8 NZ all models, Herald 14 NZ all models, Inglenook NZ**

25mm Clearance is required from outer 250mm liner to all combustibles at ceiling and roof penetrations



**Tested to AS/NZS 2918:2001**

**Manufactured by:**



## Material Clearances

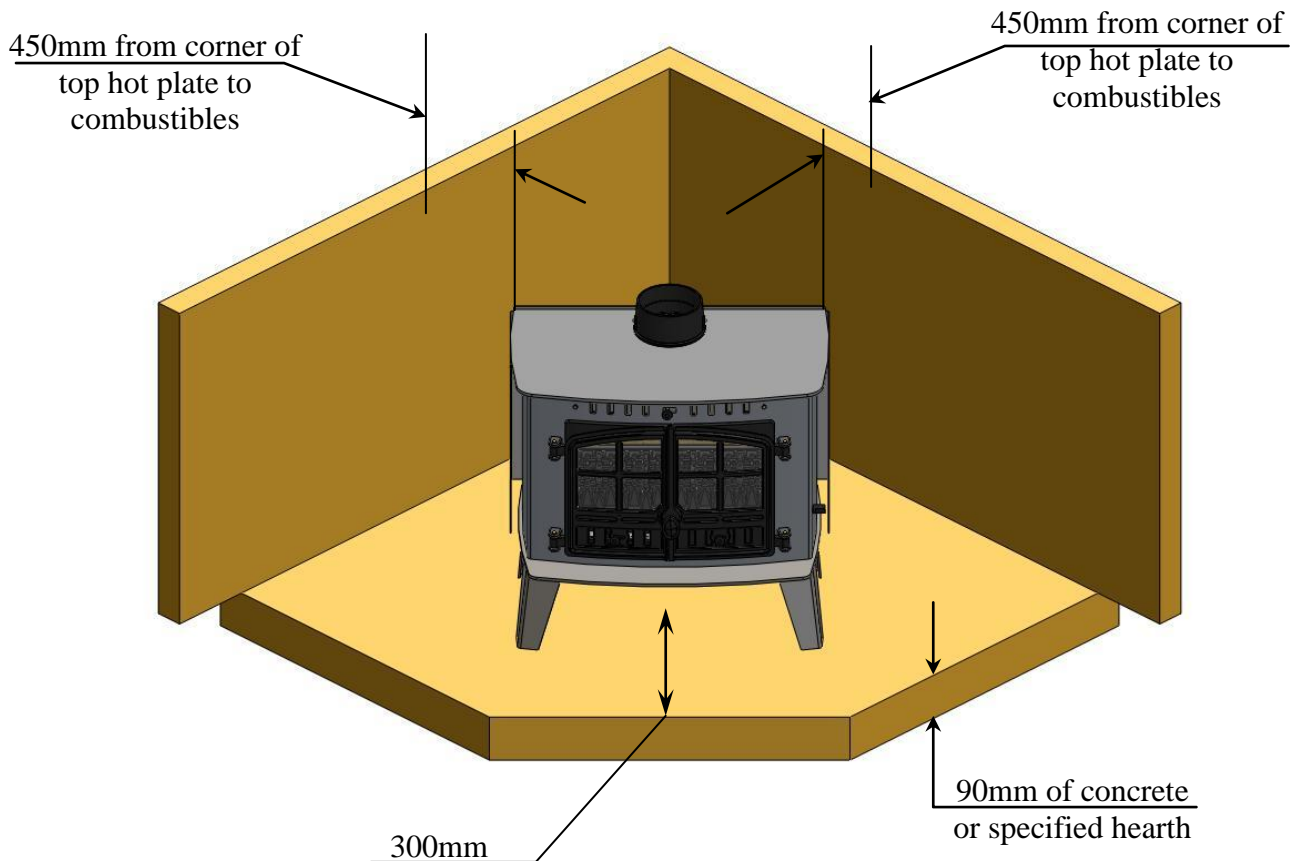
Care should be taken to level the stove using the adjusting screws in the feet.

The appliance shall be installed on a floor with adequate load-bearing capacity. If the existing construction does not meet this prerequisite, suitable measures (e.g. load distributing plate) should be taken to achieve it.

## Corner Orientation

Where the sides of the stove are at 45 degrees to the walls.

Rear corner of the stove to combustibles is 450mm.



These clearances can be reduced by using shield as stated in ASNZ 2918:2001

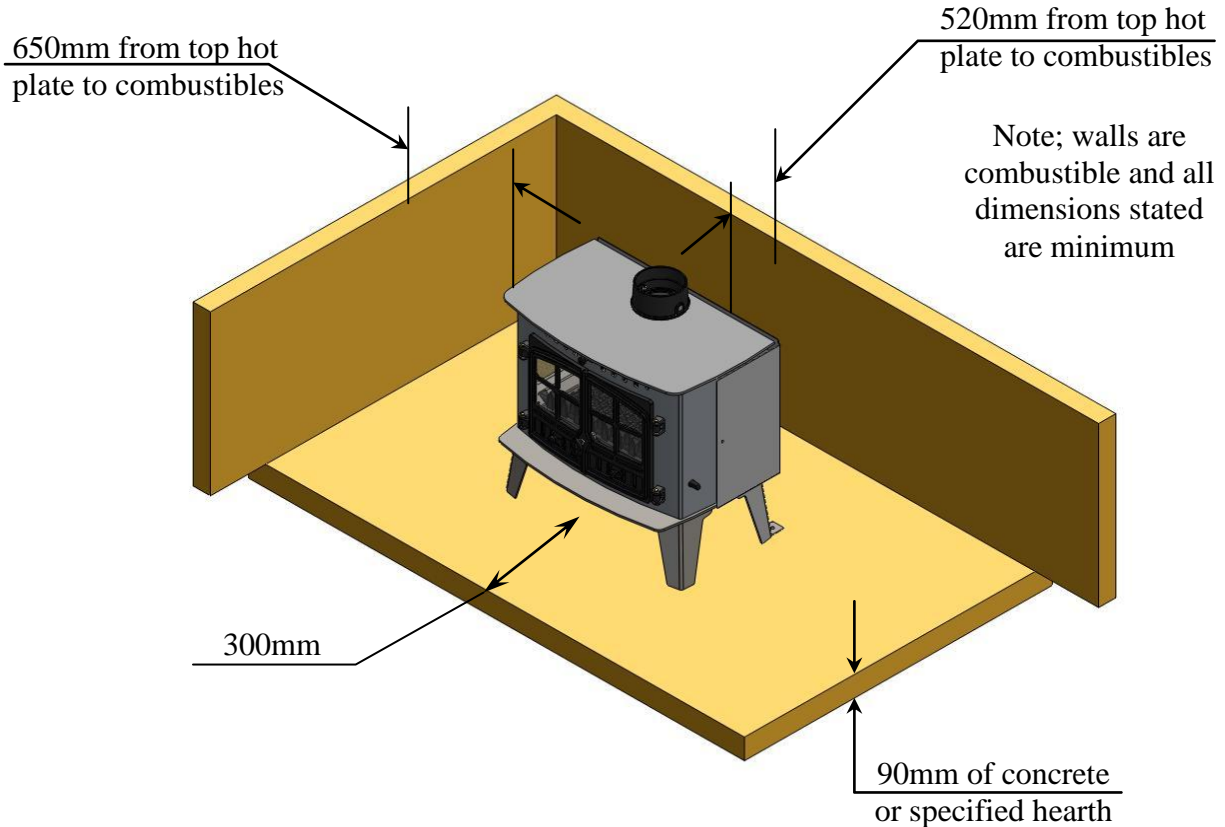
There should be **NO** furniture placed within a distance of **1 meter** from the glass surface of the stove.

Note: combustible material refers to any material that will degrade when subjected to heat e.g. plaster.

## Normal Orientation

MINIMUM DISTANCE TO COMBUSTIBLE MATERIAL	
Behind the stove (Top Plate)	520mm
At the side of the stove (Top Plate)	650mm

## Material Clearances



## PROTECTOR (Hearth) REQUIREMENTS —

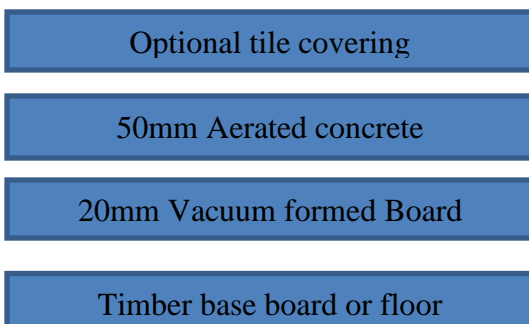
### Freestanding models

Unless your wood fire will be standing on an un-covered fireproof floor 90mm of concrete (containing no combustible material) extending at least 300mm from the appliance, it will be necessary to provide a floor protector (hearth). See below for construction details. (Fig 1)

Where the minimum size requirements bring the side of the floor protector nearly to a wall, it is advisable to extend the protector to meet the wall.

This is the only tested floor protection and must be used on timber floors.  
Raw hearth can be covered in ceramic tiles or bricks.

Fig1





## **Restraint Earthquake**

**In New Zealand, Standards require that the wood fire and floor protector be secured to prevent shifting in the event of an earthquake.**

On the hind most legs there are two tabs with 12mm diameter holes for seismic restraint.

- On a concrete floor installation your Hunter stove is secured by 2 x 10mmx60mm concrete anchors.
- Hearth over timber floor installation your Hunter stove is secured by 2 x 10mm diameter coach screws which are long enough to pass through the hearth and into the timber floor or 2 x 10mm diameter bolts which are long enough to pass through the floor and all hearth materials and bolt all together.

## **Commissioning and Handover**

Upon completion of the installation, allow a suitable period of time for any fire cement and mortar to dry out. A small fire may then be lit and checked to ensure the smoke and fumes are taken from the stove up the chimney and emitted safely to atmosphere. Do not run the stove at full output for at least 24 hours.

On completion of the installation and commissioning, ensure that the operating instructions and operating tools for the stove are left with the customer. Ensure to advise the customer on the correct use of the appliance with the fuels likely to be used on the stove and warn them to use only the recommended fuels for the stove.

Advise the user on what to do should smoke or fumes be emitted from the stove.

The user should be warned to use a fireguard in the presence of children, aged and/or infirm persons.



## Operating Instructions

This appliance is **not** suitable for use in a shared flue  
This appliance should **not** be operated with the doors open

### Aerosol Sprays

Do not use an aerosol spray on or near the stove when it is alight.

### Air Controls

This stove has been designed to burn cleaner and more efficiently than a conventional wood burning stove. If used correctly this stove will burn far more efficiently than normal with the obvious notable feature of CLEAN GLASS.

However, for this product to work properly it must be used correctly.  
It is essential that the stove has an adequate air supply for combustion and ventilation.

The primary, secondary and tertiary air inlets must be kept clear from obstruction and blockage.

### Air Controls

Secondary Air Control (Open Right)

#### **Primary Air**

*The Sliders in each Door control the Primary air.  
This provides a conventional air draught to the bed of the fire.  
The controls are open when the Sliders are pushed towards the outside of the Stove.*

Primary Air Controls (Open Outwards)

#### **Secondary Air**

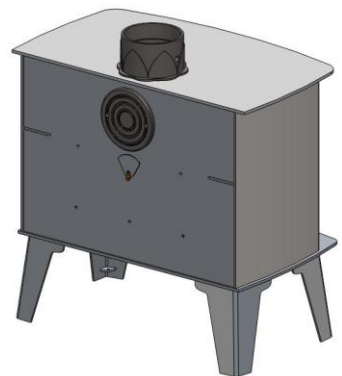
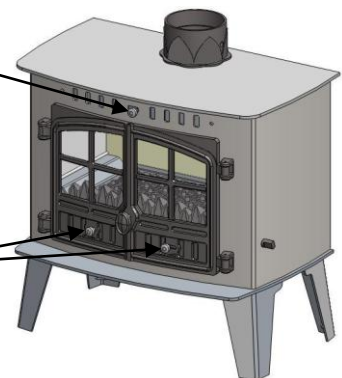
*Secondary air is controlled via the slider above the doors; it is this "Airwash" that keeps a clean and uninterrupted view of the fire.*

#### **Tertiary Air**

*Tertiary air aids in good secondary combustion of the fuel and reducing emissions into the chimney and environment. Tertiary air can be controlled by adjusting the cover plate on the back of the stove.*

### Damper Assembly (Optional)

When the damper is set in the open position the chimney draws at full draught, increasing the volume of airflow through the stove and flue. Shutting the damper restricts the flow, slowing the rate of burning.



#### **Warning!**

This Appliance will be **hot** when in operation and due care should be taken. The riddling tool may be used to operate the door handle. Thick gloves could be used to operate the primary and secondary air controls.

## Multifuel Grate

Your Hunter Stove is fitted with a locomotive type grate. So that de-ashing can be carried out cleanly and easily, it is riddled from the outside of the stove with the doors closed. The grate is designed to burn both wood and solid fuels.

**To burn wood**, push the operating tool up and away from you. When left in this position, air is restricted through the bed of the fire providing a solid base to build up a bed of ash. Surplus ash can be removed either by gentle riddling or with a shovel.

It might prove beneficial when burning more reactive fuels to leave the grate in a “neutral” position, thus directing some under fire air and some over fire air to the firebed.

## Notes on Wood burning

With a full load of wood, the stove will need to be refuelled approximately once every 75 minutes.

Wood can be stacked higher in the stove than solid mineral fuel but care must be taken that logs do not move the baffle.

Wood burns most efficiently with the primary air sliders in the closed position and the secondary control half-open. Moving the secondary control will control the burn rate of the stove.

Note - primary and secondary air is needed to light the stove, see section entitled ‘Lighting the Stove’

Wood burns best on a bed of ash and it is therefore only necessary to remove surplus ash from the stove occasionally.

Burn only dry, well-seasoned wood, which should have been cut, split and stacked for at least 12 months, with free air movement around the sides of the stack to enable it to dry out. Burning wet or unseasoned wood will create tar deposits in the stove and chimney and will not produce a satisfactory heat output.

## Lighting the Stove

We recommend that you have two or three small fires before you operate your stove to its maximum heat output. This is to allow the paint to cure in steadily and to give a long service life of the paint finish. During this curing in process you may notice an unpleasant smell. It is non-toxic, but for your comfort we would suggest that during this period you leave all doors and windows open.

First, load the fire with starting fuel, i.e. paper, dry sticks and/or firelighters.

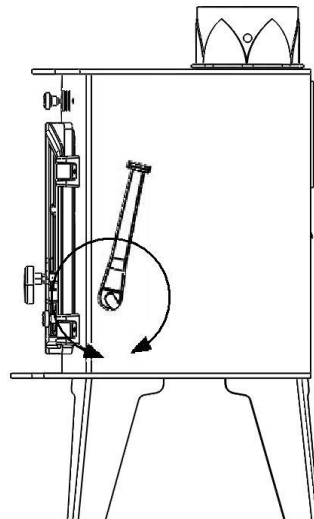
Light the fire at the base leaving all air controls open. Allow the fuel to reach a steady glow and build the fire up gradually. Once you have a good fire established across the grate bed, further fuel can be added as required.

## Extended burning

The stove can be banked up for extended burning. Empty the ashpans. Open air controls and let the fire burn brightly for a short period. Refuel and close primary and secondary air controls, the exact setting required will depend on the fuel used and the chimney draw so some practice may be necessary. It may also be necessary to adjust the tertiary air cover plate on the back of the stove. To revive the fire, open the air controls until the fire is burning brightly de-ash if necessary and refuel. Set air controls as required.

## Reduced Combustion

In order to reduce the combustion of the fire to a minimum, close the primary air sliders, then close the secondary air slider by moving the handle all the way to the left. If the controls are left in this position,



the fire will receive the minimum of air and will die down. If you want to revive the fire it is recommended that the primary air control is open first, and then open the secondary air slider.  
**Warning!**- The stove will remain **hot** for a considerable time after the fire has been extinguished.

## Recommended Fuels

Hunter Stoves Ltd recommends wood logs are used in this appliance.

Burn only dry, well-seasoned wood, which should have been cut, split and stacked for at least 12 months, with free air movement around the sides of the stack to enable it to dry out. Burning wet or unseasoned wood will create tar deposits in the stove and chimney and will not produce a satisfactory heat output.

Approval does not cover the use of other fuels either alone or mixed with the suitable fuels listed above, nor does it cover instructions for the use of other fuels.

## Safety notes for your guidance

**FIRES CAN BE DANGEROUS** – Always use a fireguard in the presence of children, the elderly or the infirm.

**DO NOT OVERFIRE** – it is possible to fire the stove beyond its design capacity, this could damage the stove, so watch for signs of overfiring – if any part of the stove starts to glow red, the fire is in an overfire situation and the controls should be adjusted accordingly. Never leave the stove unattended for long periods without first adjusting the controls to a safe setting – careful air supply control should be exercised at all times.

## WARNING – FUME EMISSION

Properly installed and operated, this appliance will not emit fumes. Occasional fumes from de-ashing and refuelling may occur. Persistent fume emission must not be tolerated.

If fume emission does persist, then the following immediate action should be taken: -

1. Open doors and windows to ventilate room.
2. Let the fire out, or eject and safely dispose of fuel from the appliance.
3. Check for flue chimney blockage and clean if required.
4. Do not attempt to re-light the fire until the cause has been identified and corrected.

If necessary, seek professional advice.

**Important!** – Do not fit an extractor fan in the same room as this appliance.

## IN THE EVENT OF A CHIMNEY FIRE

- Raise the alarm to let others in the house know.
- Call the Fire Brigade.
- Reduce the appliance-burning rate by closing all air controls.
- Move furniture and rugs away from the fireplace and remove any nearby ornaments.
- Place a fireguard or spark guard in front of the stove.
- Feel the chimney breast for signs of excessive heat.

If the wall is becoming hot, move the furniture away. Ensure that the Fire Brigade can gain access to your roof space in order to check this area for signs of fire spread.





## GENERAL MAINTENANCE

**NO** unauthorised modification of this appliance should be carried out.

This appliance requires regular maintenance by a competent engineer.

### **Baffle**

This should be removed and cleaned at least once a month to prevent any build up of soot or fly ash that could lead to blocked flue ways and dangerous fume emission.

If the baffle is removed the chimney/flue way can be swept through the appliance (top flue outlet with no damper fitted).

### **Stove Body**

The stove is finished with a heat resistant paint and this can be cleaned with a soft brush. Do not clean whilst the stove is hot; wait until it has cooled down. The finish can be renovated with Hunter stove paint.

### **Glass Panels**

Clean the glass panels when cool with a Hunter glass cleaner. Highly abrasive substances should be avoided as these can scratch the glass and make subsequent cleaning more difficult. Wet logs on heated glass, a badly aimed poker or heavy slamming of the doors could crack the glass panels. The glass will not fracture from heat.

### **Firebricks**

In normal use, these can last for many years. It is possible however, to crack them if logs are continually jammed against them or if they are frequently struck with a poker.

Check periodically for seriously cracked bricks, which can be replaced with new; available from your dealer.

### **Door Catch**

The door catch may require adjustment to maintain the door seal. By slackening the locking nut and turning the door handle one turn you will achieve a tighter lock when the door is closed.

### **Rope**

Check the rope around the door and glass. If rope is becoming detached, use Hunter Stoves rope glue to reattach it. If the rope is in a poor condition, a replacement rope kit may be ordered from the Hunter Stoves spares range.

## **Chimney and Flue ways**

It is important that the chimney, flue ways and any connecting flue pipe are swept regularly. This means at least once a year for smokeless fuels and at least twice a year for wood and other fuels. The baffle will need to be removed from its supports in order to sweep the chimney (see assembly instructions).

Only wire-centred sweeps' brushes fitted with a guide wheel should be used.

If it is not possible to sweep all parts of the chimney through the appliance, ensure there is adequate access to cleaning doors.

If the stove is fitted in place of an open fire, then the chimney should be swept one month after installation to clear any soot falls which may have occurred due to the difference in combustion between the stove and the open fire.

## **Gaskets**

All gasket used on this appliance are produced from a heat resistant material called Manniglas. Over time you may find that the gasket changes colour. This is due to a reduction in the pigment used in the manufacture of the product, and is no cause for concern.

## **Troubleshooting**

Fire will not burn

Check that:

1. The air inlet is not obstructed in any way.
2. Chimneys and flue ways are clear.
3. A suitable fuel is being used.
4. There is an adequate air supply into the room.
5. An extractor fan is not fitted in the same room as the stove.
6. Flue draught is above minimum level (see installation instructions).

Fire blazing out of control

Check that:

1. The doors are tightly closed.
2. The air controls are all in the closed position.
3. A suitable fuel is being used.
4. The glass retaining clips are not loose.
5. The door rope seals are in good condition
6. Flue draught is below maximum level (see installation instructions).



## STOVE SPARES

Only Hunter Stoves authorised spares should be used with this appliance

### SINGLE DOOR

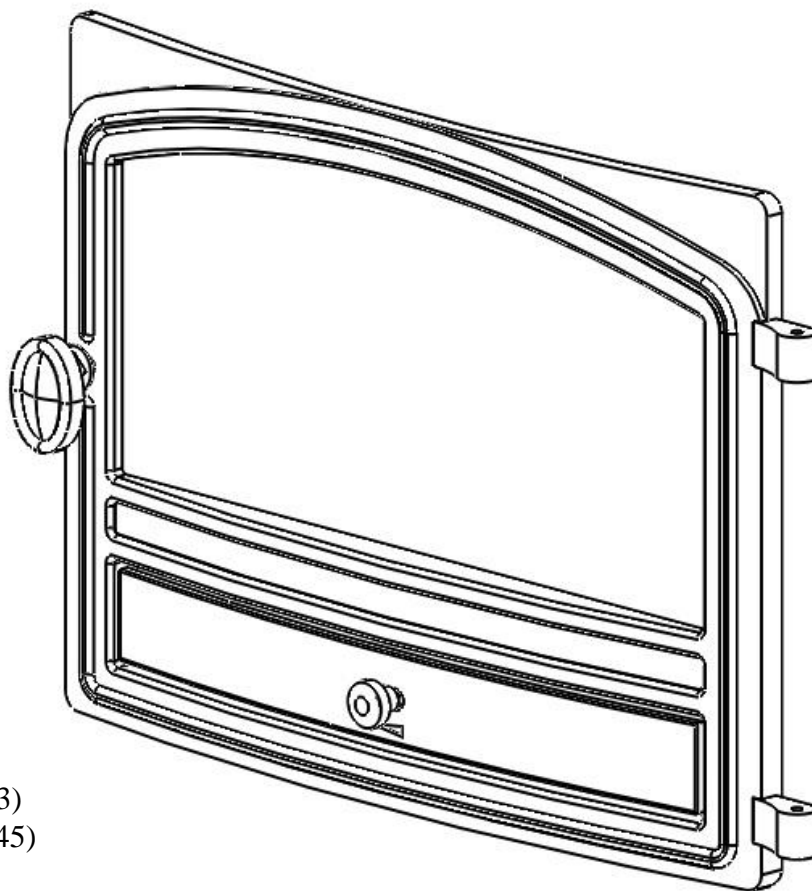
Door Glass  
(HHR08/074)

Glass Gasket  
(HHR08/075)

Door Handle  
(HCR06/059)

Door Catch Assembly  
(HH04/ARRT/034)

Door Slider (CH08/003)  
Slider Knob (HHR08/045)



Single Door  
(HHR08/072)

Glass Clip  
(HHR08/164)

Glass Clip Screw  
(FSJM05008SS)

Door Cover  
(HHR08/073)

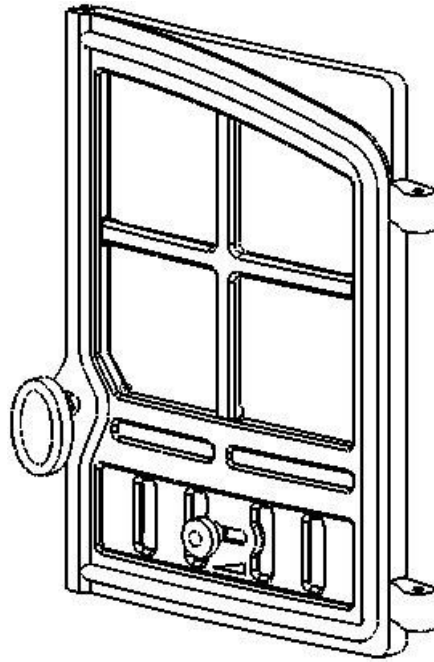
Rope Sealing Kit  
(SCPH8SDSK)

## RIGHT HAND DOOR

Door Glass  
(HHR08/082)

Glass Gasket  
(HHR08/081)

Door Knob (HCR06/059)  
Washer (FWFM08025)  
Catch Shaft (HHR08/111)  
Circlip (FLRX07)  
M8 Full Nut (FNFM08)  
Catch (HMSS04/037)



Right Hand Door  
(HHR08/084)

Glass Clip (HHR08/046)  
Glass Clip Screw (FSJM05008SS)

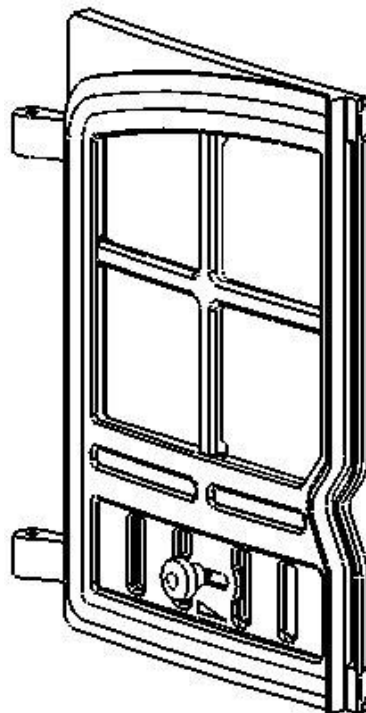
Door Slider (HHR08/199)  
Slider Knob (HHR08/045)

## LEFT HAND DOOR

Left Hand Door  
(HHR08/079)

Door Glass  
(HHR08/082)

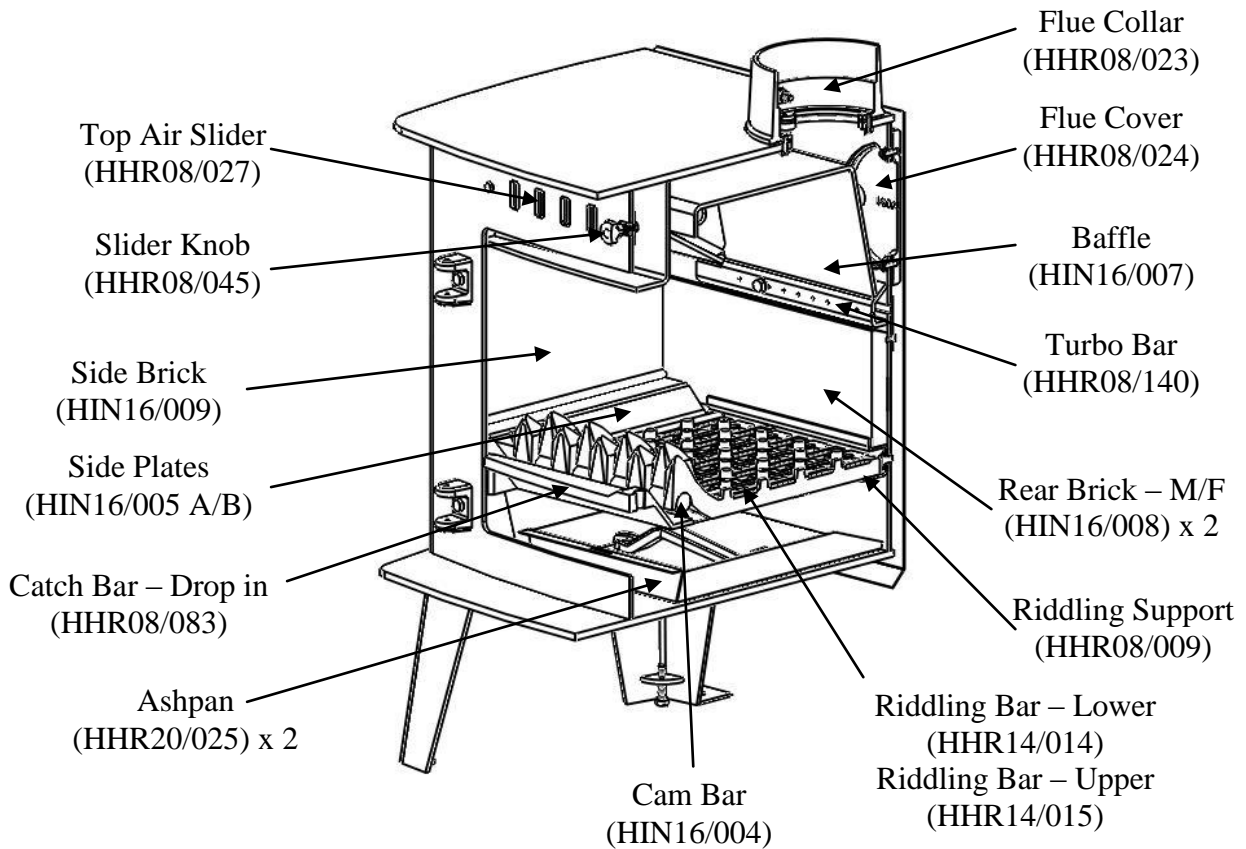
Glass Gasket  
(HHR08/081)



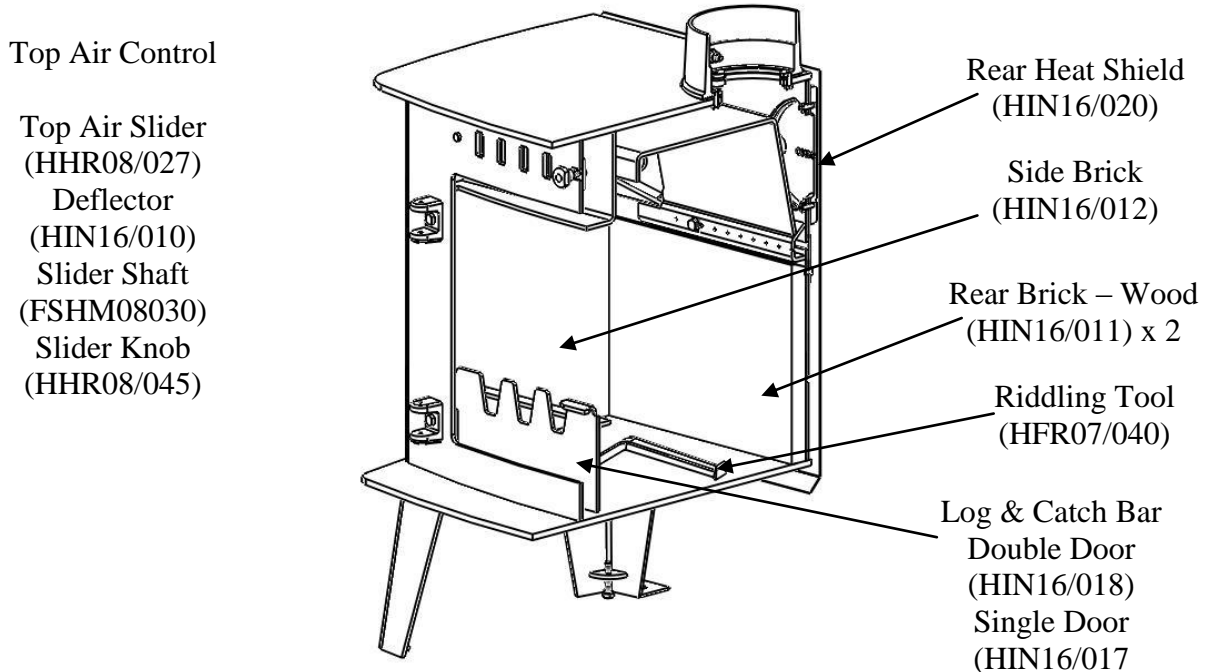
Glass Clip (HHR08/046)  
Glass Clip Screw (FSJM05008SS)

Door Slider (HHR08/199)  
Slider Knob (HHR08/045)

**STOVE BODY ASSEMBLY - PART SECTION – MULTIFUEL**



**STOVE BODY ASSEMBLY - PART SECTION - WOOD**



# SERVICE RECORDS

“Services is Yearly for warranty”

**1<sup>ST</sup> SERVICE**

Date of Service:.....

Signed:.....

Company:.....

Next Service Due:.....

Baffle		Door Seals	
Boiler Treatment		Flue Cleaned	
Bricks		Grate	

**2<sup>ND</sup> SERVICE**

Date of Service:.....

Signed:.....

Company:.....

Next Service Due:.....

Baffle		Door Seals	
Boiler Treatment		Flue Cleaned	
Bricks		Grate	

**3<sup>RD</sup> SERVICE**

Date of Service:.....

Signed:.....

Company:.....

Next Service Due:.....

Baffle		Door Seals	
Boiler Treatment		Flue Cleaned	
Bricks		Grate	

**4<sup>TH</sup> SERVICE**

Date of Service:.....

Signed:.....

Company:.....

Next Service Due:.....

Baffle		Door Seals	
Boiler Treatment		Flue Cleaned	
Bricks		Grate	

**5<sup>TH</sup> SERVICE**

Date of Service:.....

Signed:.....

Company:.....

Next Service Due:.....

Baffle		Door Seals	
Boiler Treatment		Flue Cleaned	
Bricks		Grate	
Radiator Flush			

**6<sup>TH</sup> SERVICE**

Date of Service:.....

Signed:.....

Company:.....

Next Service Due:.....

Baffle		Door Seals	
Boiler Treatment		Flue Cleaned	
Bricks		Grate	

**7<sup>TH</sup> SERVICE**

Date of Service:.....

Signed:.....

Company:.....

Next Service Due:.....

Baffle		Door Seals	
Boiler Treatment		Flue Cleaned	
Bricks		Grate	

**8<sup>TH</sup> SERVICE**

Date of Service:.....

Signed:.....

Company:.....

Next Service Due:.....

Baffle		Door Seals	
Boiler Treatment		Flue Cleaned	
Bricks		Grate	

**9<sup>TH</sup> SERVICE**

Date of Service:.....

Signed:.....

Company:.....

Next Service Due:.....

Baffle		Door Seals	
Boiler Treatment		Flue Cleaned	
Bricks		Grate	

**10<sup>TH</sup> SERVICE**

Date of Service:.....

Signed:.....

Company:.....

Next Service Due:.....

Baffle		Door Seals	
Boiler Treatment		Flue Cleaned	
Bricks		Grate	
Radiator Flush			

**11<sup>TH</sup> SERVICE**

Date of Service:.....

Signed:.....

Company:.....

Next Service Due:.....

Baffle		Door Seals	
Boiler Treatment		Flue Cleaned	
Bricks		Grate	

**13<sup>TH</sup> SERVICE**

Date of Service:.....

Signed:.....

Company:.....

Next Service Due:.....

Baffle		Door Seals	
Boiler Treatment		Flue Cleaned	
Bricks		Grate	

**15<sup>TH</sup> SERVICE**

Date of Service:.....

Signed:.....

Company:.....

Next Service Due:.....

Baffle		Door Seals	
Boiler Treatment		Flue Cleaned	
Bricks		Grate	
Radiator Flush			

**17<sup>TH</sup> SERVICE**

Date of Service:.....

Signed:.....

Company:.....

Next Service Due:.....

Baffle		Door Seals	
Boiler Treatment		Flue Cleaned	
Bricks		Grate	

**19<sup>TH</sup> SERVICE**

Date of Service:.....

Signed:.....

Company:.....

Next Service Due:.....

Baffle		Door Seals	
Boiler Treatment		Flue Cleaned	
Bricks		Grate	

**12<sup>TH</sup> SERVICE**

Date of Service:.....

Signed:.....

Company:.....

Next Service Due:.....

Baffle		Door Seals	
Boiler Treatment		Flue Cleaned	
Bricks		Grate	

**14<sup>TH</sup> SERVICE**

Date of Service:.....

Signed:.....

Company:.....

Next Service Due:.....

Baffle		Door Seals	
Boiler Treatment		Flue Cleaned	
Bricks		Grate	

**16<sup>TH</sup> SERVICE**

Date of Service:.....

Signed:.....

Company:.....

Next Service Due:.....

Baffle		Door Seals	
Boiler Treatment		Flue Cleaned	
Bricks		Grate	

**18<sup>TH</sup> SERVICE**

Date of Service:.....

Signed:.....

Company:.....

Next Service Due:.....

Baffle		Door Seals	
Boiler Treatment		Flue Cleaned	
Bricks		Grate	

**20<sup>TH</sup> SERVICE**

Date of Service:.....

Signed:.....

Company:.....

Next Service Due:.....

Baffle		Door Seals	
Boiler Treatment		Flue Cleaned	
Bricks		Grate	
Radiator Flush			